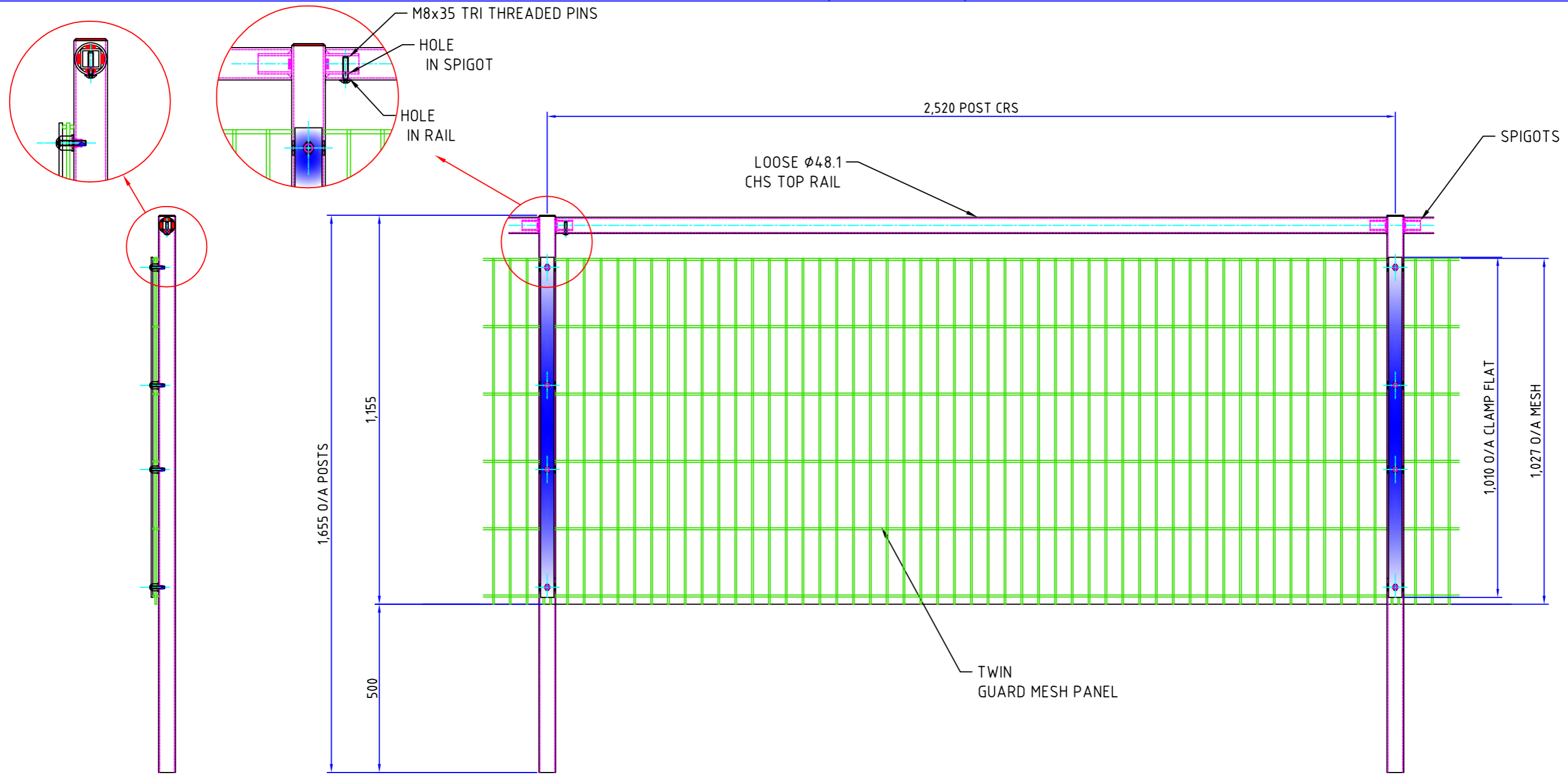


MUST BE READ IN-CONJUNCTION WITH WORKS INSTRUCTION SHEET

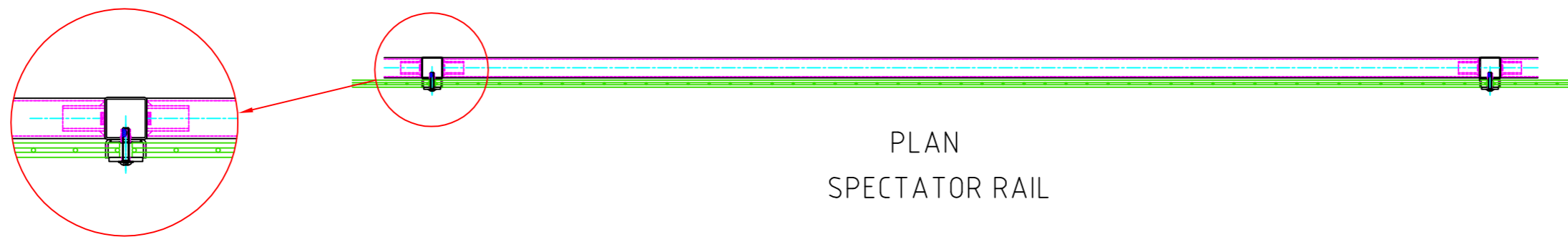
OF

IF IN DOUBT - "ASK"



TYPICAL SECTION

REAR ELEVATION



PLAN SPECTATOR RAIL

REVISIONS		
REV	DESCRIPTION OF CHANGE	DATE



Etna Works,
 Duke Street,
 Fenton,
 Stoke-on-Trent
 ST4 3NS
 Telephone- 01782 319 264
 E-MAIL-waynew@barkersfencing.com
 Web Site-barkersfencing.com

ALL DIMENSIONS IN MILLIMETRES UNLESS STATED OTHERWISE UPTO - 1000mm +/- 1.0mm
 NORMAL TOLERANCES UNLESS STATED OTHERWISE OVER - 1000mm +/- 2.0mm
 PLEASE NOTE THAT THIS ORDER WILL BE ACCEPTED BY US STRICTLY ON CONDITION THAT CONFORMITY TO ANY SPECIFICATION FOR THE GOODS OR MATERIALS, INCLUDING ANY RELEVANT PLANS OR DRAWINGS IS SUBJECT AT ALL TIMES TO THE APPLICABLE BRITISH STANDARD ROLLING DIMENSIONAL TOLERANCES (INCLUDING SIZE AND THICKNESS)
 THE INFORMATION CONTAINED IN THIS DRAWING IS THE PROPERTY OF "BARKERS ENGINEERING LTD". COPYRIGHT IS RESERVED BY THEM AND THE CONTENT IS USED ON THE CONDITION THAT IT IS NOT COPIED, REPRODUCED, RETAINED OR DISCLOSED TO ANY UNAUTHORISED PERSON EITHER WHOLLY OR IN PART WITHOUT THE CONSENT IN WRITING OF "BARKERS ENGINEERING LTD".

MATERIAL
 MATERIAL GRADE: S 235
WELDING
 ALL WELDS TO: BS 1722 Pt9
FINISH
 GALVANIZED TO: BS EN 1461
 POWDERCOAT TO: (RAL 0000)

TITLE DETAIL OF 1.15M HIGH SPECTATOR RAIL C/W LOOSE TOP RAIL & TWIN MESH INFILL LOOSE SYSTEM
CLIENT **JOB No**
DRAWN BY LUKE **SCALE** DO NOT **ORDER No**
CHECKED BY WAYNE **DATE** 24.06.19 **DRAWING No**